

6

5

4

3

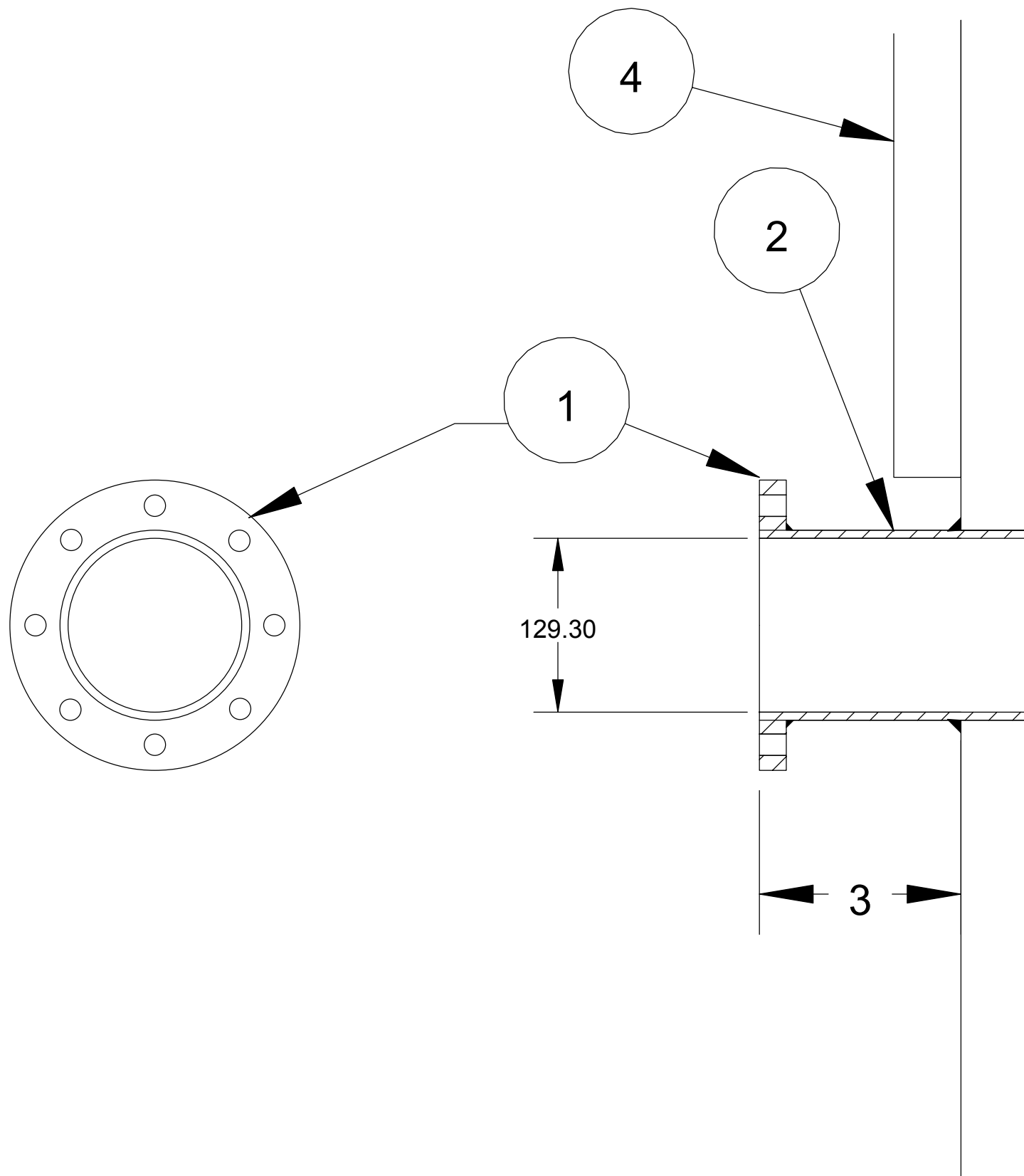
2

1

NOTES.

- 1. FLANGE BS 10 - 125 MM (5")
- 2. PIPE STUB 125 MM (5") NB SCHEDULE 40
- 3. PIPE STUB LENGTH SHOULD BE A MINIMUM OF 75 MM FROM STACK WALL (RECOMMENDED 100MM)
- 4. RECOMMENDATION THAT 1000 MM UNISTRUT P1000 FIT VERTICAL TO CENTRE LINE OF SAMPLE PORT ON THE STACK WALL FOR POSITIONING OF MONORAIL SYSTEM

STACK WALL



TITLE
STANDARD RECOMMENDED SAMPLE PORT

SIZE A3	CAGE CODE	DWG NO STA051202	REV 0
SCALE NTS	DRG BY DRC	SHEET	

6

5

4

3

2

1